

KC75

Casement window.

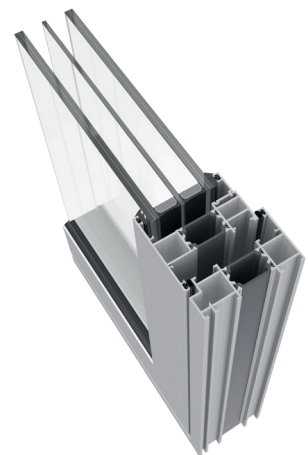
Aluminium windows make a stunning statement in any home. **KC75** aluminium windows have slim frames that maximise the amount of natural light, making them perfect for both traditional and modern homes.

With a choice of design options, this system comes with a multitude of practical features for today's modern day living, while exceeding the energy performance requirements of current Part L Building Regulations.



Features

- PAS 24 tested
- Top and side hung applications
- Joined using mechanical corner cleats
- 75 mm polyamide sub frame section, for easy to install modular windows
- Egress option available
- Slimline internal glazing option
- Cills, add ons, curtain walling insert & coupler sections available
- Flush sash option available



TECHNICAL FEATURES

Design
 KC75 casement window has an extensive range of sections giving versatility and a wide range of design options. Its flush or chamfered internally beaded sash sections make this system an ideal choice for residential or commercial applications. Its complete range of 75 mm subframe and coupling sections make this window appropriate for ribbon runs or school refurbishment and commercial projects.

Features
 With a glazing range from 24 to 56 mm the system can easily accept triple glazed units or even units incorporating interstitial blinds. Also, the HOi version introduces foam strips to further improve thermal efficiency for higher specification projects.

Benefits
 KC75 system offers high thermal efficiency giving a U_w value of 1,4 W/m²K. The window has been tested in accordance with BS6375-1 2015 for Air, Water and Wind resistance making **KC75** an ideal choice for exposed or remote sites.

Possibilities
 This system offers a reverse rebate adaptor, compatible on both fixed and opening lights, allowing internal beading in a cost-effective manner. Its clever design "double beaded" transom options negate the use of a reverse rebate adaptor, improving thermal efficiency and reduces sightlines.



Maximum size	1500x1500 mm top hung 900x1500 mm side hung
Maximum weight	50 kg
Maximum glazing	56 mm
Polyamide	32 mm
U_w value	1,2 W/m ² K

Air/Water/Wind tests according to standard BS6375-1



✓ PAS 24 Security

✓ BS6375-2

