

Your ideas.
Our passion.



EXLABESA

ARCHITECTURE

Exlabesa Building Systems Ltd.

Ogden Road - Wheatley Hills
DONCASTER DN2 4SG
Tel. +44 01302 762500 Fax + 44 01302 762557
www.exlabesa.co.uk



Exlabesa Building Systems Ltd. prohibits total or partial reproduction of this brochure by any written means, as well as magnetic or electronic devices, without our express and written authorization.
Exlabesa Building Systems Ltd. reserves the right to modify, improve or remove without prior notice any of the products shown in this catalogue.
Exlabesa Building Systems Ltd. is not responsible for possible mistakes that may occur in this brochure and recommends verifying that the references appearing here are correct before making any order.
The material lists, modulations and discounts included in all models are illustrative and it is the customers responsibility to carry out the pertinent checks before proceeding with an order.



Experience & expertise in aluminium systems

At Exlabesa we have been shaping aluminium for more than 50 years. Our experience and expertise have allowed us to expand globally being currently present in more than 40 countries.

At our Architecture division, we design and extrude high quality aluminium windows & doors systems. From high performing aluminium window and door glazing profiles for the residential market to aluminium curtain walling systems for high profile commercial projects, at Exlabesa we can assure you the best system's performance and the aesthetics you need.

Casement Windows
Tilt & Turn Windows
Sliding Doors
Bi-folding Doors
Residential doors
Curtain walling
Shopfronts
Glass Balustrades



UK based factory to shape your projects

We want to ensure that all customers receive high quality and easy to fabricate aluminium systems with quick lead-times and a fully personalised service.

That's why we have a factory located on a 9-acre site in Doncaster, South Yorkshire, which is fully equipped with two modern extrusion lines, one vertical and completely automated paint line, one anodising line, one polyamide assembly line, one CNC centre and a large storage area for bars, hardware and accessories allowing us to offer windows, doors and curtain walling systems that meet the highest UK industry standards.

Our inimitable production capabilities, state-of-the-art technology and the best talent in the industry allow us to offer a professional range of glazing solutions.

We are the perfect
partner for fabricators,
installers and architects
across the UK



Why choose Exlabesa windows and doors systems

Fabricator and Fitter Friendly

Our aluminium windows and doors systems are designed with fabricators and installers in mind. Thanks to the compatibility of both sections and accessories across the ranges, our customers can manage low stock levels. The innovative design of our systems allows for ease of fabrication and installation. As part of our fabricator support package we provide tooling on a free-on-loan basis including pneumatic punch tools and hand tools.

High Performance

Our aluminium systems are rigorously tested to industry standards for air, water and wind resistance, ensuring our customers always receive quality aluminium products and best possible performance. Our systems also allow double and triple glazing that maximise U-value, guaranteeing a high thermal efficiency of each window and door.

Full Security

Security is a must in every glazing system. That's why we are committed to meet current building regulations, with most of our systems having PAS 24 accreditation, to offer reassuring security as well as meeting the requirements of Document Q of Building regulations.

Leading Industry Lead Time

Our commitment to offer the best service to our costumers has led us to offer unbeatable delivery times. At our Doncaster factory we do in-house all the aluminium production processes, from extrusion to painting. We also have a large stock area dedicated to profiles, accessories and hardware that allow us to deliver single colour profiles in 3 weeks and dual colour profiles in 4 weeks.



We help you throughout
the process,
from fabrication
to installation

Support Hub

Technical Support

We want to help you throughout the whole sales process from fabrication to installation. Our technical team helps you to choose the best Exlabesa system to maximise the performance and the style of your project.

We offer complete and detailed fabrication manuals, technical details, CAD sections, inertia calculation among other important information to allow you take full advantage of our systems.

Windows & Doors Software

At Exlabesa we want to make the sales, production and manufacture of our aluminium systems a dynamic, agile and intuitive process.

We provide the most professional glazing software in the industry, essential for an advanced management of your manufacturing process. With our software you can configure, design, quote and process all your windows, doors, curtain walling and railing systems. Get a full control of all your processes, from material orders to sales and production, generating all the associated work documentation.



Training Lab

We know that fabrication and installation are key to achieving the maximum performance of a system. Our engineers offer product training to help you fabricate and install the full suite of our systems in the most efficient way.

We provide on-site support with tailored step-by-step training on fabrication of our glazing systems and most importantly our support is designed to overcome any day-by-day issues that may be encountered in the manufacturing process.



Designing tomorrow

Quality

Thanks to our know-how and skills, we are capable not only of meeting current regulations, but also exceeding them, making our aluminium systems the best option for all kind of building projects.

We test our systems according to PAS 24 and we develop them to meet the requirements of document Q of Building Regulations.

At Exlabesa we are accredited to ISO9001:2015 (Quality Management System) and ISO18001 (Health & Safety) to as well as guaranteeing that our team members are in an environment that facilitate their performance.





One need. One system.

Design

Our glazing systems are flexible and adaptable, designed to maximise profiles and parts. Most of them share same components to help you keep low stock levels.

Our casement systems have great versatility. They can be fabricated as internally or externally beaded and are compatible with both opening and fixed lights giving you the flexibility to create the most cost-effective solutions.

Colour

We take care of the details, adapting our products to any requirements in terms of appearance. We offer an unlimited range of colours and finishes including painted and anodised with the best quality guaranteed by Qualicoat seal.

Our glazing systems also allow dual colour to maximise bespoke options with different finishes inside and outside.

Full compatibility.

Aesthetic

Our aluminium windows add elegance to every installation thanks to its slim profiles. Our systems maximises the amount of available daylight and our versatile range give you the freedom to achieve any required aesthetic style. Our flush, chambered, sculptured, flat faced or stepped sash sections, among others, give real versatility to create what you need, making our systems match any architectural style.

Openings

From our classical casement windows, to our versatile tilt and turn system or our bifolding and sliding doors, we can provide a complete range of opening options.

Index of systems

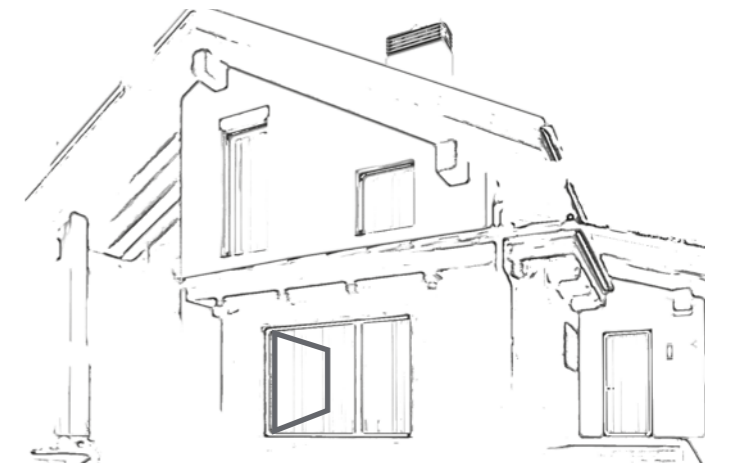
- 17 Casement windows
 - 18 KC51
 - 20 KC75
 - 22 KS59
- 25 Tilt & Turn window
 - 26 KT51
- 29 Sliding doors
 - 30 KLS
 - 32 Xlaslide
- 35 Bi-folding door
 - 36 Xlafold
- 39 Residential door
 - 40 KD51
- 43 Curtain walling
 - 44 ECW-50
 - 46 KLW
- 49 Shopfront
 - 50 KTS
 - 52 KSF
- 55 Glass balustrade
 - 56 Glass Rail

Exlabesa Building Systems Ltd.

Ogden Road - Wheatley Hills
DONCASTER DN2 4SG
Tel. +44 01302 762500 Fax + 44 01302 762557
www.exlabesa.co.uk



Casement windows



Exlabesa Building Systems Ltd.

Ogden Road - Wheatley Hills
DONCASTER DN2 4SG
Tel. +44 01302 762500 Fax + 44 01302 762557
www.exlabesa.co.uk



EXLABESA
ARCHITECTURE

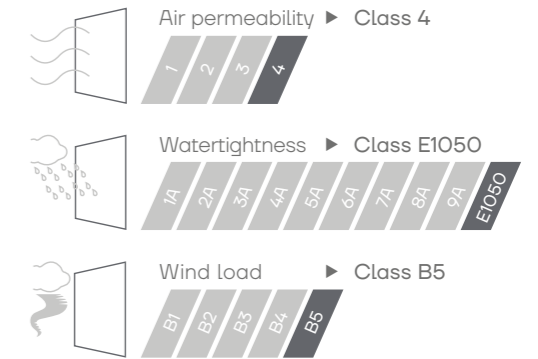
KC51

Casement window.

Innovation and aesthetics united in a single system. KC51 Casement window mixes a modern and contemporary appearance with optimal technical features, especially its safety and energy saving benefits.



Maximum size	1500x1500 mm top hung 900x1500 mm side hung
Maximum weight	50 kg
Maximum glazing	32,8 mm
Polyamide	24 mm
U _w value	1,5 W/m²K

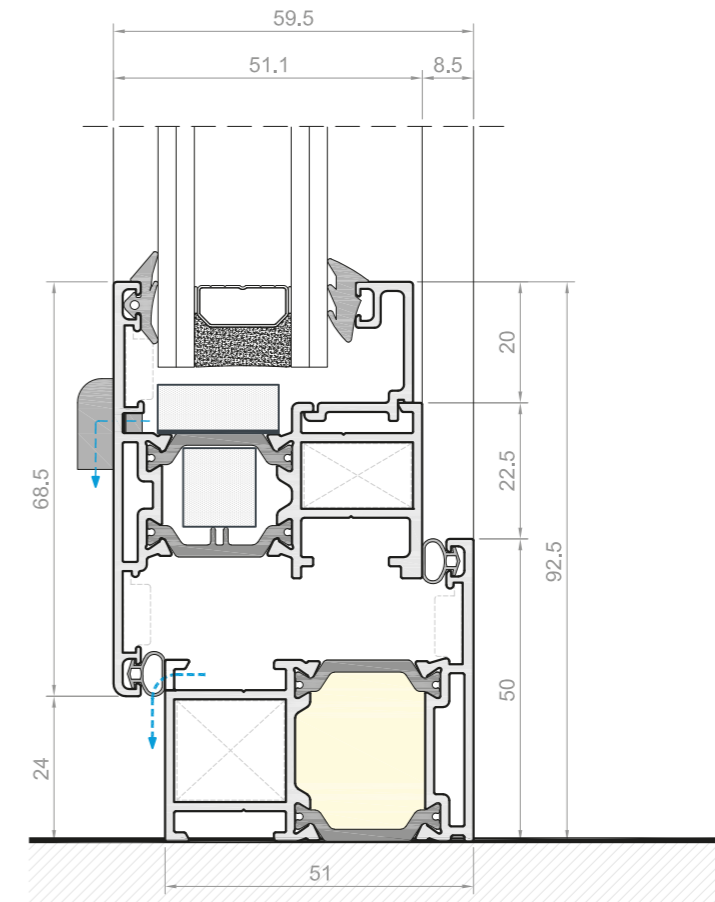


Air/Water/Wind tests according to standard BS6375-1

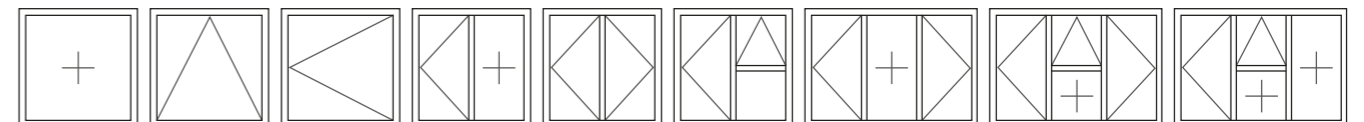
✓ PAS 24 Security ✓ BS6375-2 ✓ BS6375-3

Features

- PAS 24 tested
- Top and side hung applications
- 24 mm polyamides
- 4 to 33 mm glass options available
- Joined using mechanical corner cleats
- 75 mm polyamide sub frame section, for easy to install modular windows
- Egress options as standard
- Cills, add ons, curtain walling insert and coupler sections available
- Reverse adaptors for interior/exterior glazing



TYPICAL CONFIGURATIONS



KC75

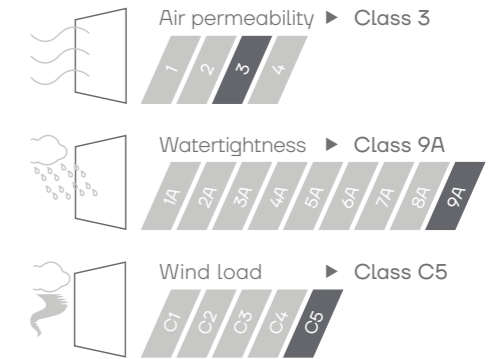
Casement window.

Aluminium windows make a stunning statement in any home. KC75 aluminium windows have slim frames that maximise the amount of natural light, making them perfect for both traditional and modern homes.

With a choice of design options, this system comes with a multitude of practical features for today's modern day living, while exceeding the energy performance requirements of current Part L Building Regulations.

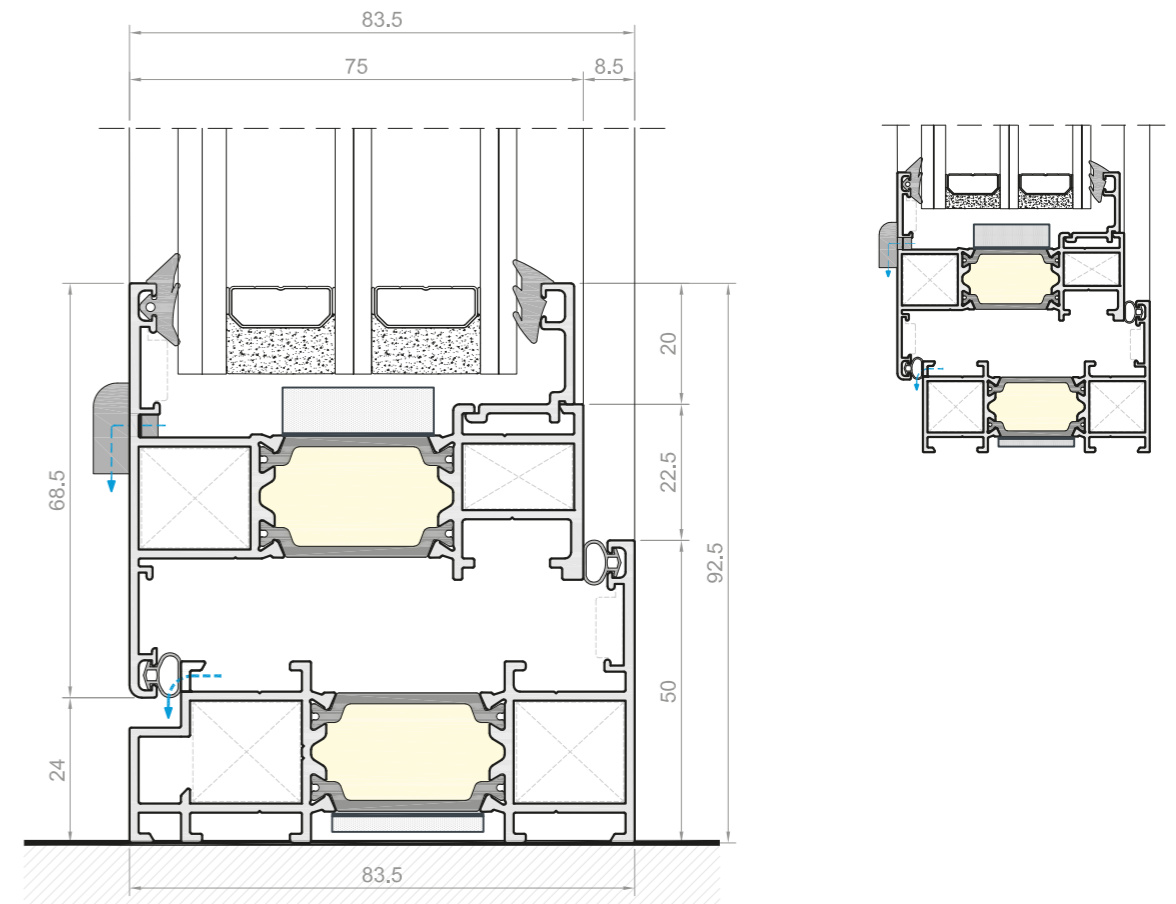


Maximum size	1500x1500 mm top hung 900x1500 mm side hung
Maximum weight	50 kg
Maximum glazing	56 mm
Polyamide	32 mm
U _w value	1,2 W/m²K



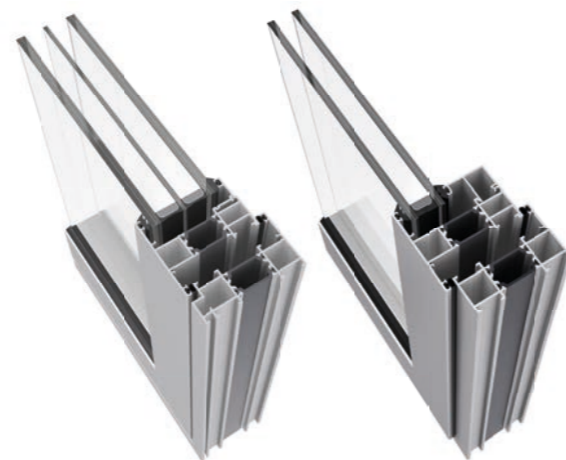
Air/Water/Wind tests according to standard BS6375-1

✓ PAS 24 Security ✓ BS6375-2

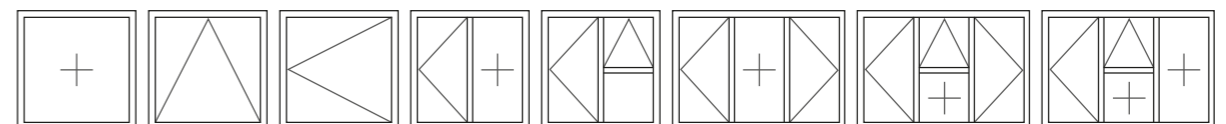


Features

- PAS 24 tested
- Top and side hung applications
- Joined using mechanical corner cleats
- 75 mm polyamide sub frame section, for easy to install modular windows
- Egress option available
- Slimline internal glazing option
- Cills, add ons, curtain walling insert & coupler sections available
- Flush sash option available



TYPICAL CONFIGURATIONS



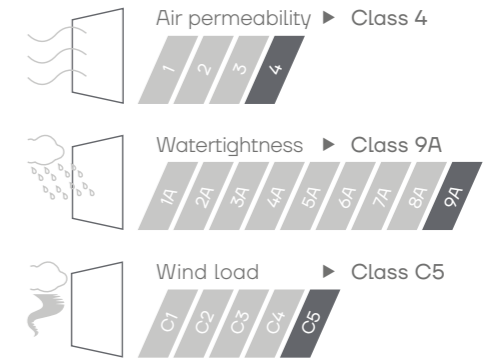
KS59

Casement window.

A modern design that maximizes the glazed area is a must in any window system. KS59 Steel lookalike casement window is designed to mimic steel windows. This open out window system unites performance and practicality to give a contemporary look where slim sightlines and profiled sections stand out, making it an ideal choice for both refurbishments and new builds.



Maximum size	1200x1500 mm top hung 600x1200 mm side hung
Maximum weight	50 kg
Maximum glazing	28 mm
Polyamide	24/32 mm
U _w value	1,4 W/m ² K

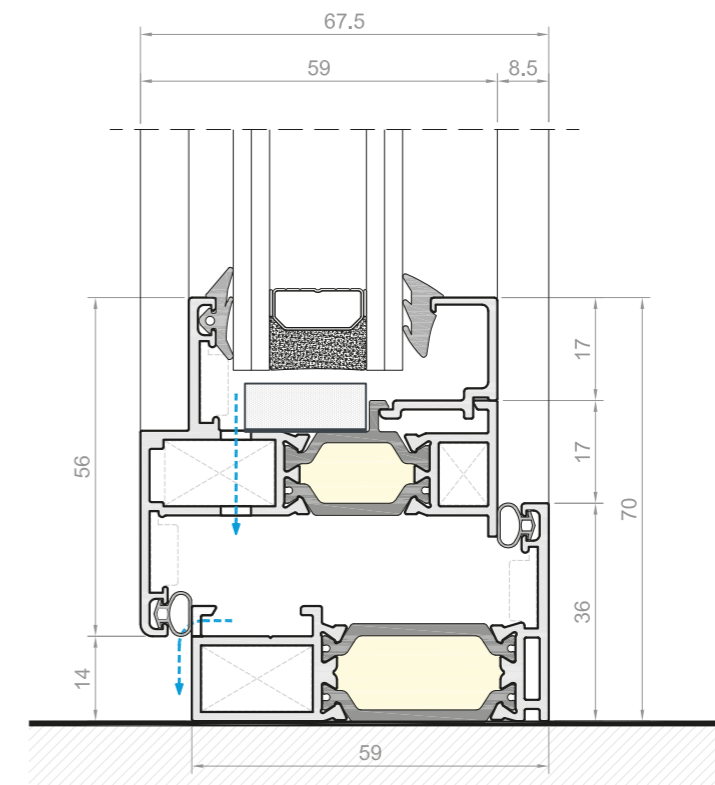
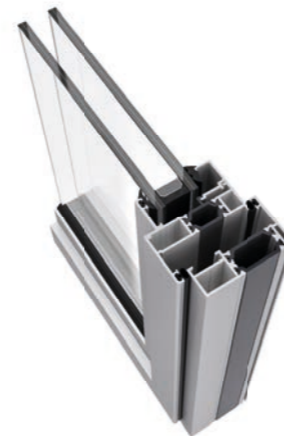


Air/Water/Wind tests according to standard BS6375-1

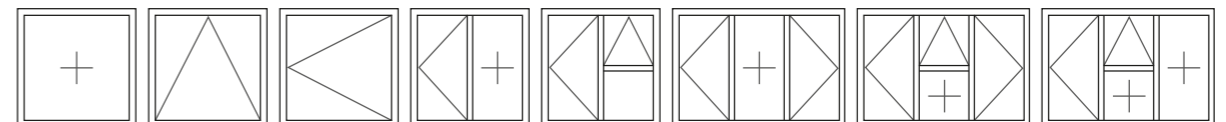


Features

- Top and side hung applications
- 32 mm polyamide
- 28 mm glass, as standard
- Joined using mechanical corner cleats
- Egress options available
- Cills, add ons and coupler sections available



TYPICAL CONFIGURATIONS



Tilt & Turn window



Exlabesa Building Systems Ltd.

Ogden Road - Wheatley Hills
DONCASTER DN2 4SG
Tel. +44 01302 762500 Fax + 44 01302 762557
www.exlabesa.co.uk



EXLABESA
ARCHITECTURE

KT51

Tilt & Turn window.

A system capable of adapting to the aesthetic and functional needs of any building is essential in architecture. KT51 Tilt & Turn offers a huge range of adaptable options for any room, thanks to the combination of its opening possibilities. Furthermore, its technical features are excellent, making this system one of the most complete in our range.

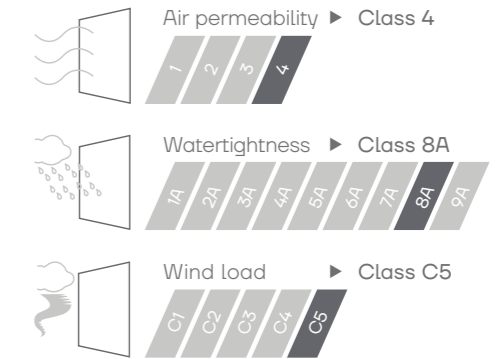


Features

- Top and side hung applications, as well as Tilt & Turn
- 32 mm polyamide
- 28 mm glass, as standard
- Joined using mechanical corner cleats
- Egress options available
- Cills, add ons, curtain walling insert and coupler sections available

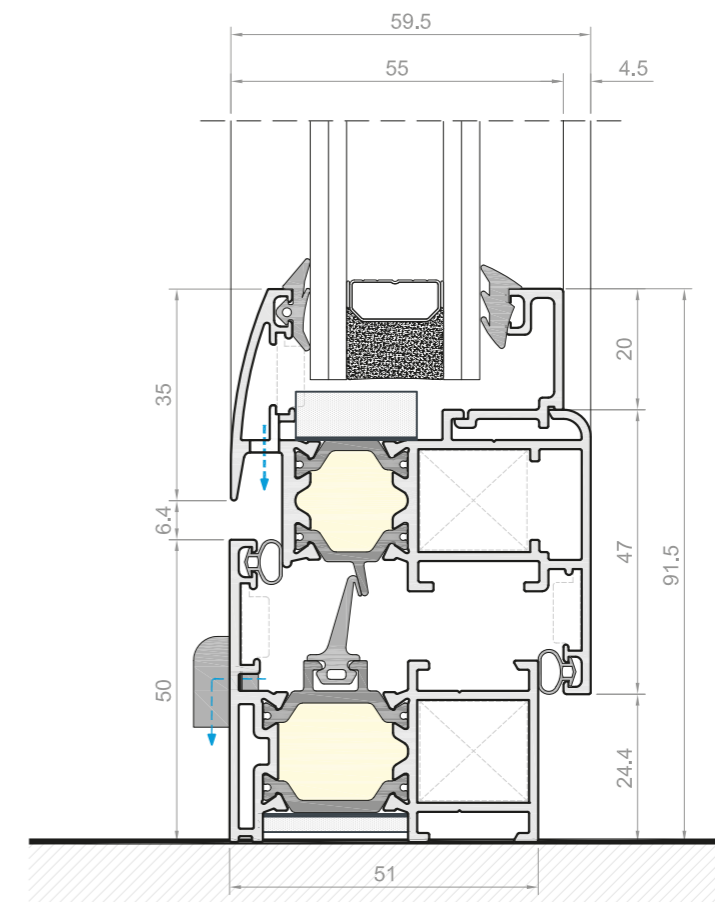


Maximum leaf size	1500x2100 mm
Maximum weight	90 kg
Maximum glazing	32,8 mm
Polyamide	24/32 mm
U _w value	1,4 W/m²K

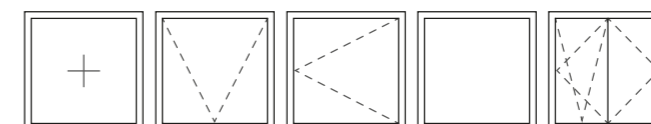


Air/Water/Wind tests according to standard BS6375-1

✓ PAS 24 Security ✓ BS7950 Security ✓ BS6375-2



TYPICAL CONFIGURATIONS



Sliding doors



Exlabesa Building Systems Ltd.

Ogden Road - Wheatley Hills
DONCASTER DN2 4SG
Tel. +44 01302 762500 Fax + 44 01302 762557
www.exlabesa.co.uk



EXLABESA
ARCHITECTURE

KLS

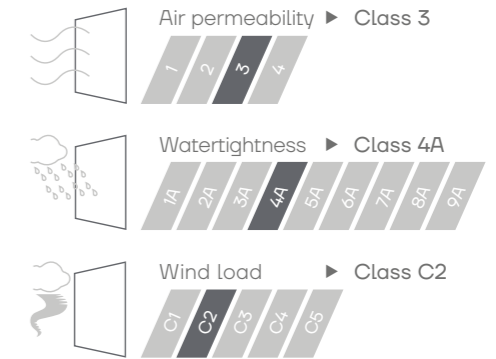
Lift & Slide patio door.

KLS aluminium patio doors offers a full width clear opening to your terrace and garden. With the trend for large expanses of glass that give unrestricted views to the outside, the patio door delivers this better than any other type of door on the market.

Viewed from inside or outside, the KLS aluminium patio door will transform the look of your room as well as your home.



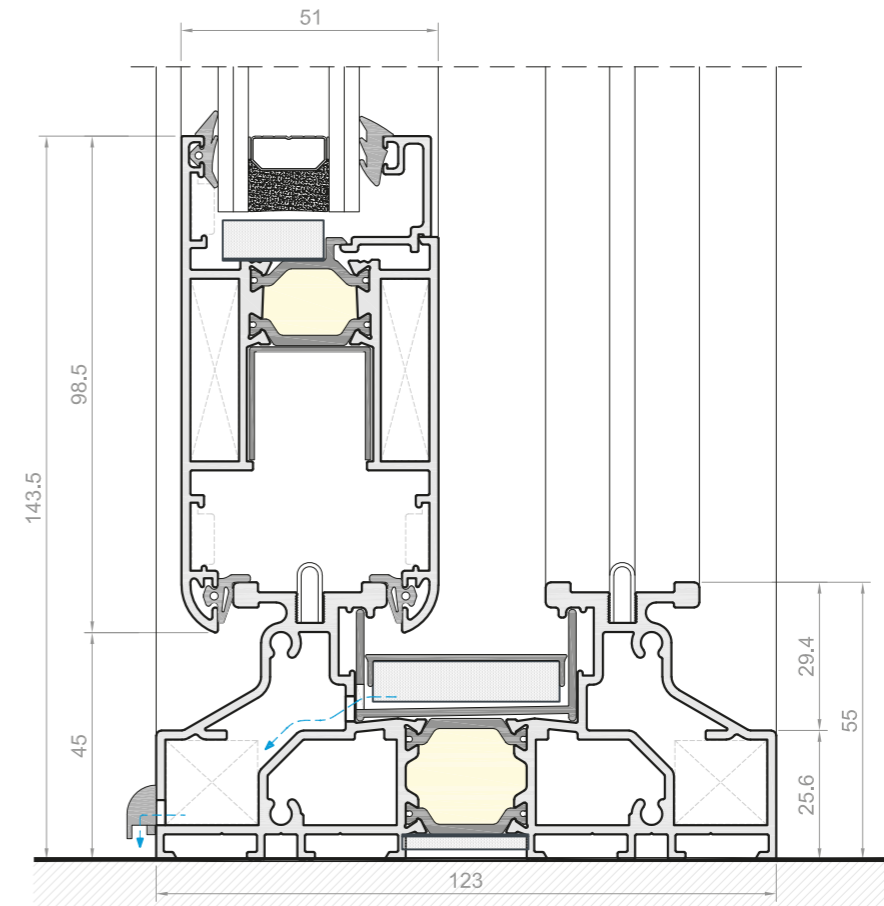
Maximum leaf size	3300x3200 mm
Maximum weight	400 kg lift & slide 220 kg slide only
Maximum glazing	39,5 mm
Polyamide	24 mm
U _w value	1,4 W/m ² K



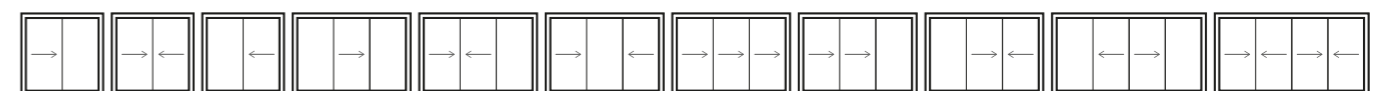
Air/Water/Wind tests according to standard Weather (EU test)

Features

- Mechanical corner joint for ease of fabrication
- Variation of glass thickness' available
- Doors up to 400 kg available
- Outstandingly smooth & quiet sash movement
- Internally beaded for security
- Hardware designed to ensure ease of use



TYPICAL CONFIGURATIONS



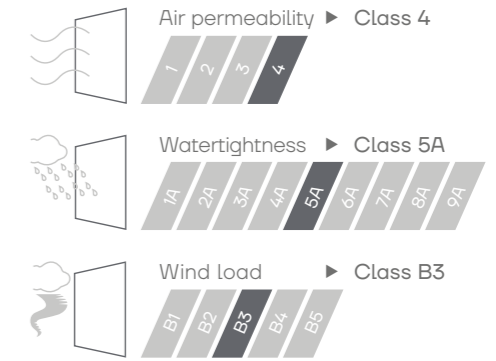
Xlaslide

Sliding patio door.

Connecting the internal and external space, giving significance to glass is a trend in architecture. Xlaslide patio door, with its modern design focused on its slim sightlines, provides an extraordinary connection with the outside, maximizing the sunlight entry into the room.



Maximum leaf size	2430x2500 mm
Maximum weight	200 kg
Maximum glazing	36 mm
Polyamide	24 mm
U _w value	1,2 W/m ² K

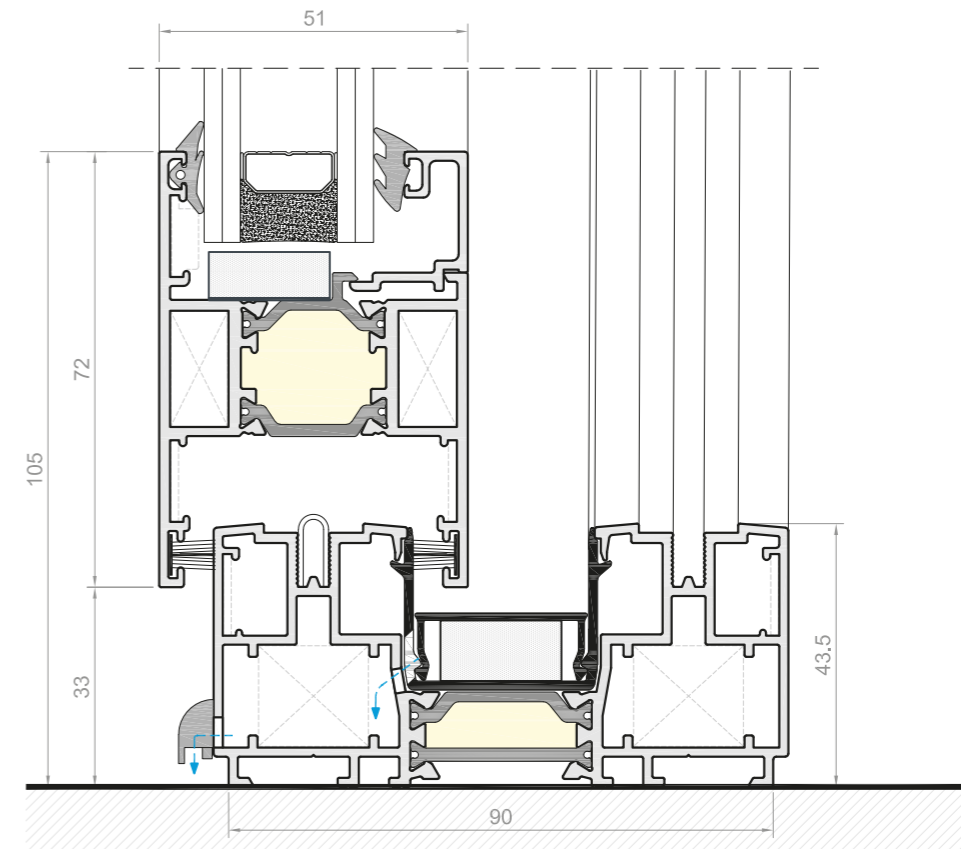


Air/Water/Wind tests according to standard BS6375-1

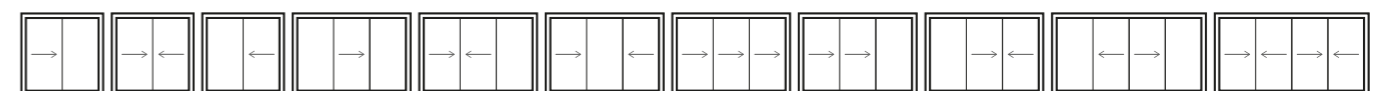


Features

- Mechanical corner joint for ease of fabrication
- Slim 32 mm interlock available
- Slim sightlines
- Twin & Triple track options
- Internally beaded for security
- Doors up to 200 kg available



TYPICAL CONFIGURATIONS



Bi-folding door



Exlabesa Building Systems Ltd.

Ogden Road - Wheatley Hills
DONCASTER DN2 4SG
Tel. +44 01302 762500 Fax + 44 01302 762557
www.exlabesa.co.uk



EXLABESA
ARCHITECTURE

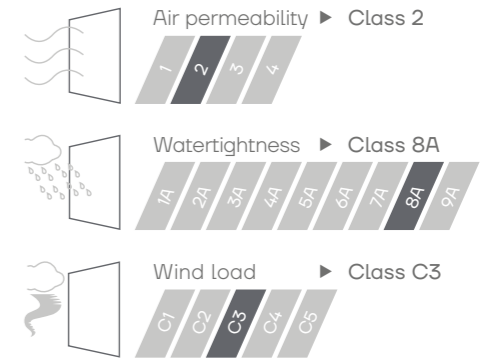
Xlafold

Bi-folding door.

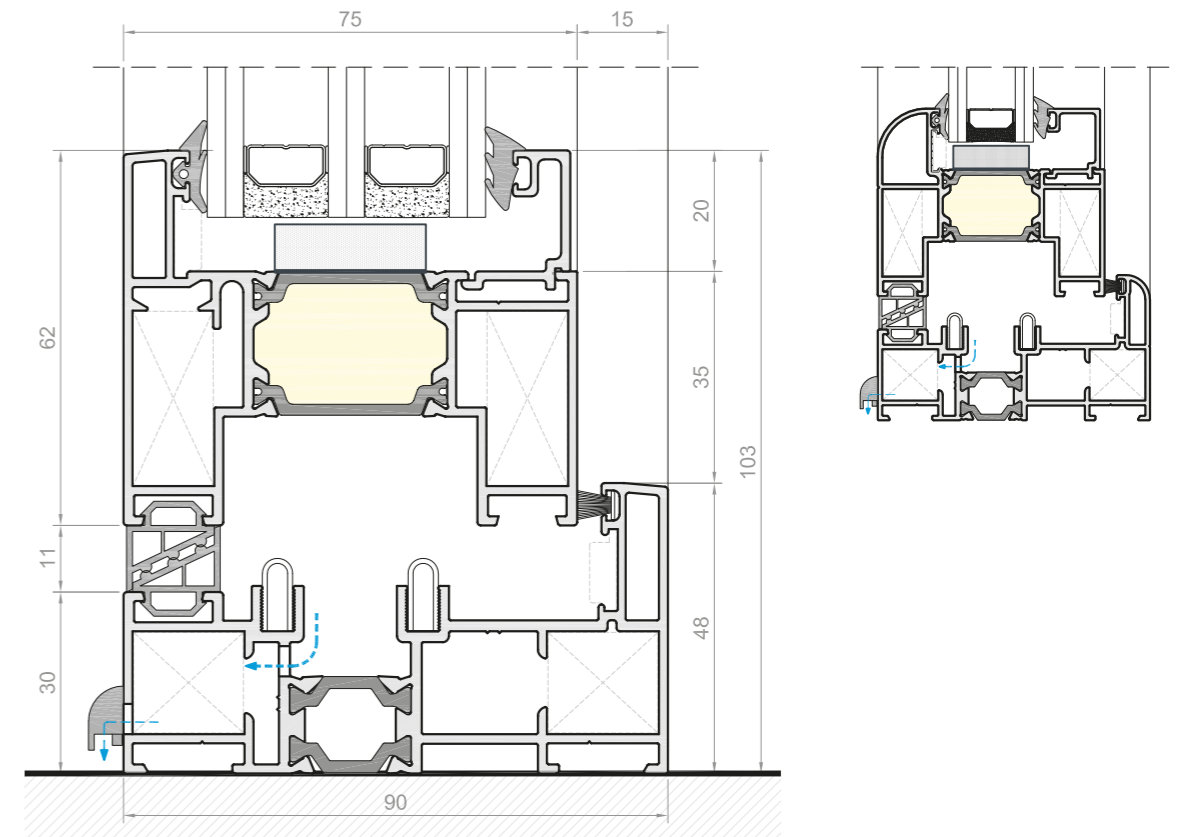
Nothing beats the feel-good factor of an open living space. A seamless transition to outdoor living, Xlafold aluminium bi-folding doors offer superb slimline aesthetics with a strong, robust performance. This system maximises the glazed area thanks to their sleek, slimline aluminium profiles which deliver maximum light appeal.



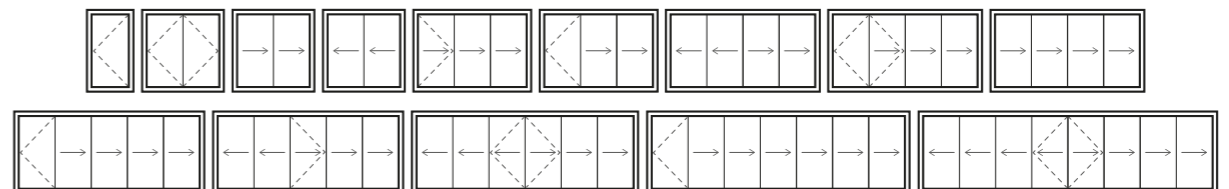
Maximum leaf size	1000x2400 mm
Maximum weight	100 kg
Maximum glazing	40 mm
Polyamide	20/32 mm
U _w value	1,2 W/m ² K



Air/Water/Wind tests according to standard BS6375-1

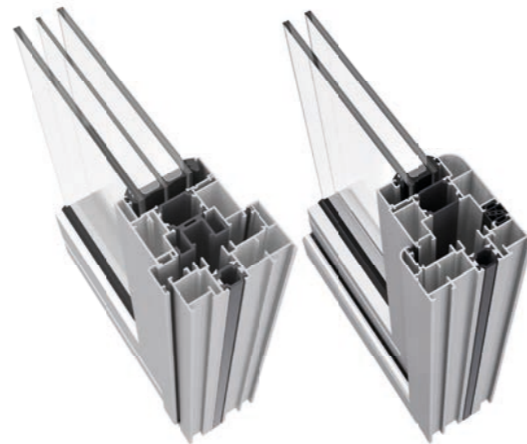


TYPICAL CONFIGURATIONS



Features

- Range of configurations available
- Half rollers available for even panel number configurations
- Choice of glazing thickness available
- Square or curved sash and outer frame options
- Square or bevelled beads
- Internally beaded for security
- Open in and open outdoors available
- "Master" doors with 3 point locking available
- French door opening configuration available



Residential door



Exlabesa Building Systems Ltd.

Ogden Road - Wheatley Hills
DONCASTER DN2 4SG
Tel. +44 01302 762500 Fax + 44 01302 762557
www.exlabesa.co.uk



EXLABESA
ARCHITECTURE

KD51

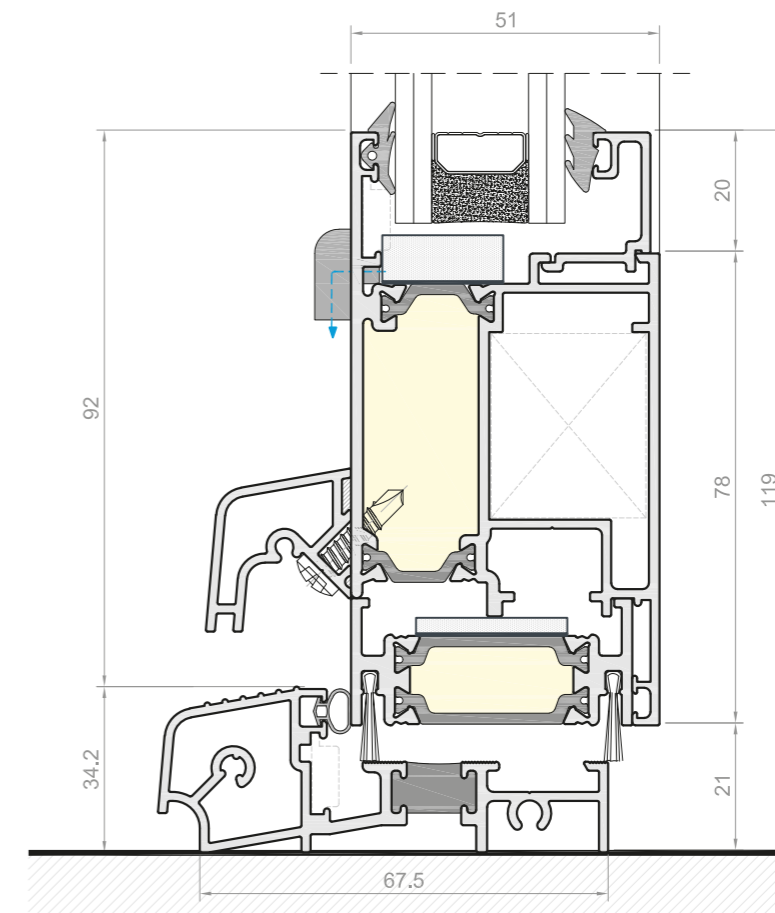
Residential door.

Make an entrance to your home with a KD51 aluminium entrance door. Our aluminium rebated thermal doors create a beautiful entrance to match the style of your home perfectly.

Aluminium doors offer strength and durability and are highly resistant to corrosion for years of trouble-free use and operation. The natural strength of aluminium gives you beautiful sleek lines, less frame and more glass area.



Maximum sash size	1100x2400 mm
Maximum weight	50 kg
Maximum glazing	32,8 mm
Polyamide	19 mm
U _w value	1,5 W/m ² K

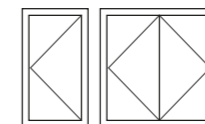


Features

- Inward & outward open application available
- 28 mm glass as standard as well as a wide variety of other options
- Joined using mechanical corner cleats
- 75 mm polyamide sub frame section for easy to install modular doors
- Doors easily integrated with EBS window systems
- Cills, add ons, curtain walling insert & coupler sections available
- Multipoint locking available for secure doors



TYPICAL CONFIGURATIONS



Curtain walling



Exlabesa Building Systems Ltd.

Ogden Road - Wheatley Hills
DONCASTER DN2 4SG
Tel. +44 01302 762500 Fax + 44 01302 762557
www.exlabesa.co.uk



EXLABESA
ARCHITECTURE

ECW-50

Curtain walling.

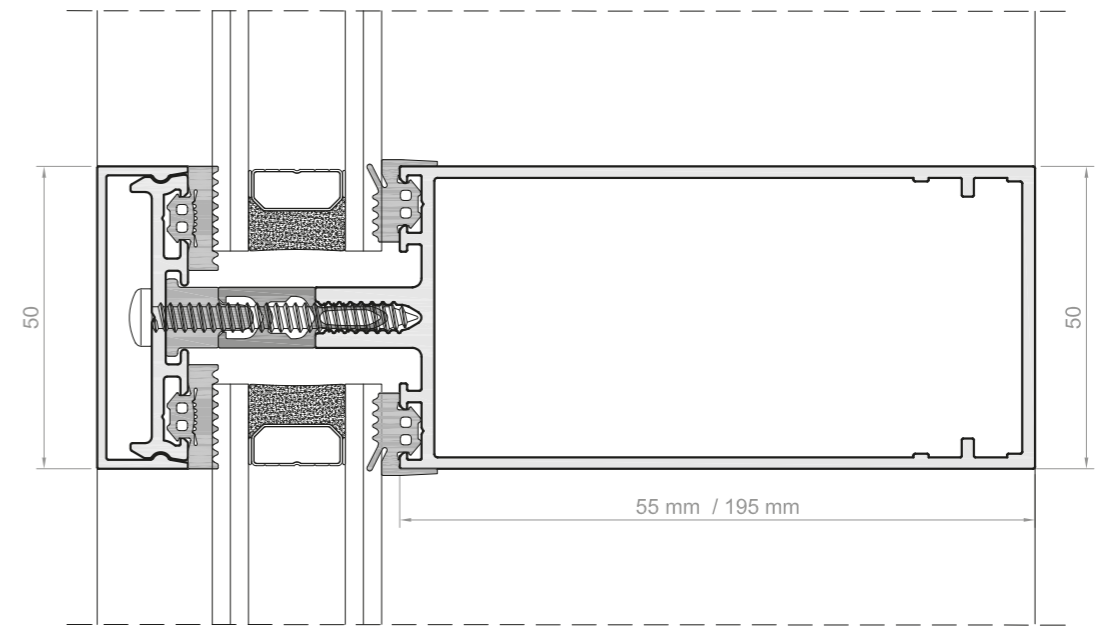
Curtain walling allows a multitude of possibilities to achieve the uniqueness that all construction requires. ECW-50 curtain walling allows the design of structures with great creativity and visual lightness with only 50 mm of front seen in the supporting structure.



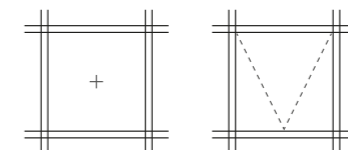
Maximum weight	350 kg
Maximum glazing	46 mm
CWCT	Test cert available upon request

Features

- CWCT tested
- 50 mm curtain walling system
- Mullion sizes to 250 mm
- Transom sizes to 195 mm
- Polyamide thermal break for improved thermal efficiency
- Glazing to 46 mm
- Window & door insert available
- Internal reinforcing bars available for bigger spans
- A range of external caps available



TYPICAL CONFIGURATIONS



KLW

Curtain walling.

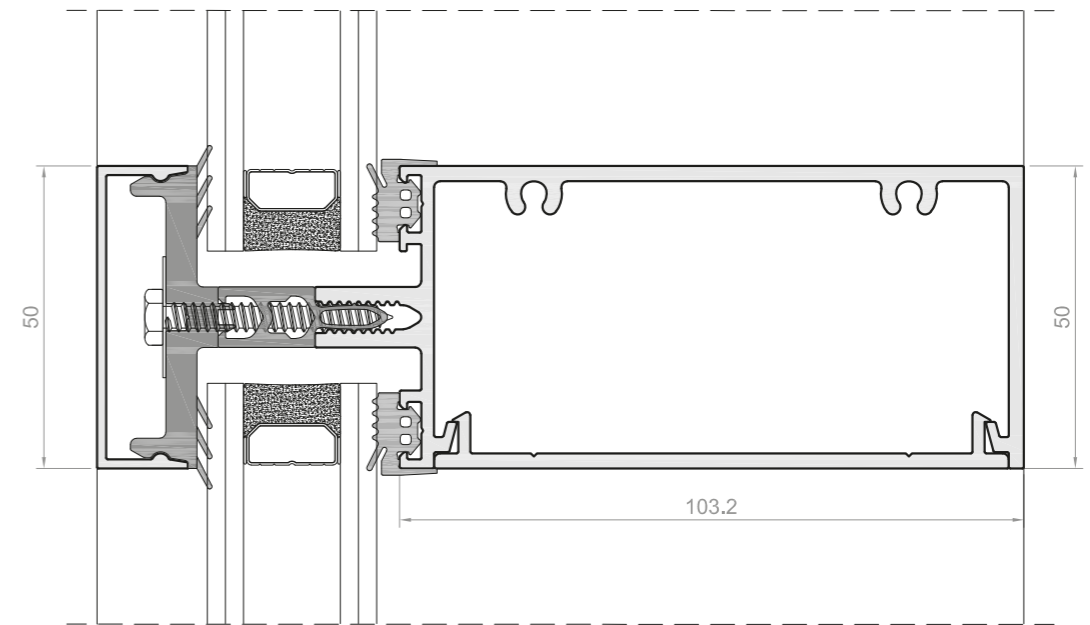
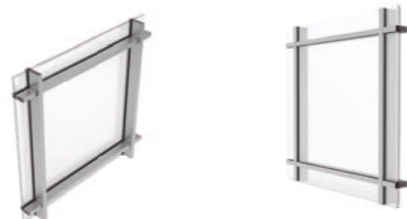
A visually slim system that maximises the glazed area, enhancing the appeal of a façade. KLW curtain walling system is only 50 mm wide, making it ideal for a huge range of projects where glass is the main point.



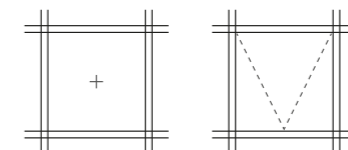
Maximum weight	Consult Exlabesa technical department
Maximum glazing	34 mm

Features

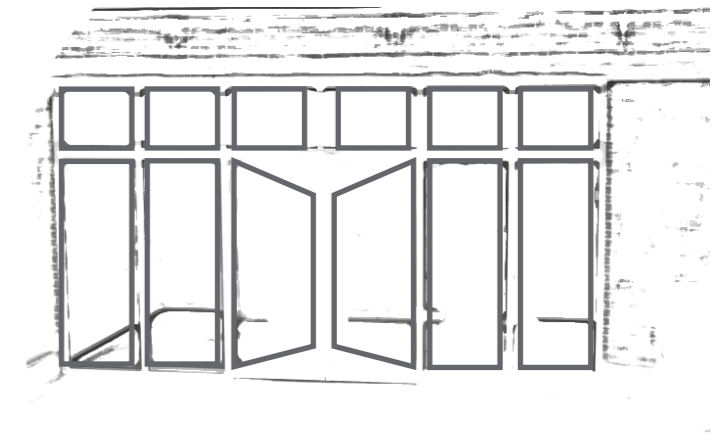
- 50 mm channel & plate curtain walling system
- Transom/Mullion sizes from 50 mm to 125 mm
- Polyamide thermal break for improved thermal efficiency
- 28 mm glazing as standard
- Window & door insert available
- Faceted sections available for angled screens
- Internal reinforcing bars available for bigger spans
- A range of external caps available



TYPICAL CONFIGURATIONS



Shopfront



Exlabesa Building Systems Ltd.

Ogden Road - Wheatley Hills
DONCASTER DN2 4SG
Tel. +44 01302 762500 Fax + 44 01302 762557
www.exlabesa.co.uk



EXLABESA
ARCHITECTURE

KTS

Thermal shopfront.

Security is essential when we talk about a front door. KTS Thermal shopfront is a robust system that maximizes security and ensures high thermal isolation thanks to thermal breakage. This mix makes this system an ideal choice for any kind of shopfront.

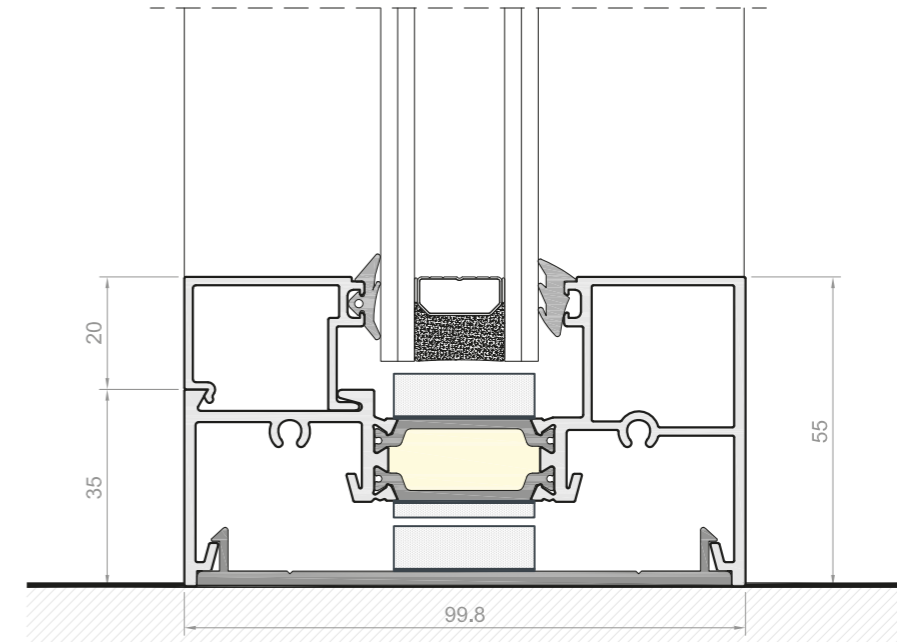


Maximum leaf size	1150x2400 mm
Maximum weight	65 kg
Maximum glazing	28,8 mm framing 32,8 mm door
Polyamide	24/32 mm
U _w value	1,4 W/m ² K

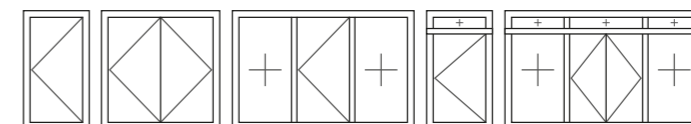
✓ PAS 24 Security

Features

- Range of shop front and door sections available
- Double glazed unit's standard throughout for improved thermal efficiency
- One section door leaf makes for a cost-effective system with little waste
- Mechanical corner joints on doors to make assembly simple
- Shop front and doors available in dual colour



TYPICAL CONFIGURATIONS



KSF

Shopfront.

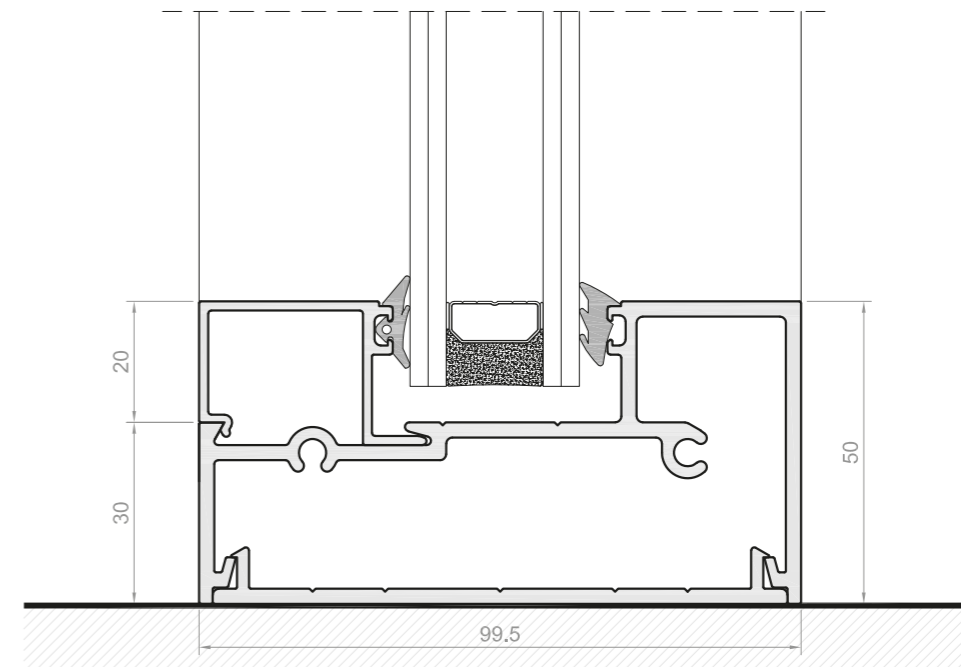
A robust system designed thinking of its installation on shopfronts, KSF combines durability and a modern design that maximizes the glazed area with excellent value for money. This door is not only an excellent option for exteriors, it is also a good choice for interior spaces.



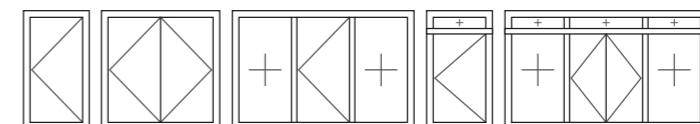
Maximum leaf size	1150x2400 mm
Maximum weight	65 kg
Maximum glazing	28,8 mm framing 32,8 mm door

Features

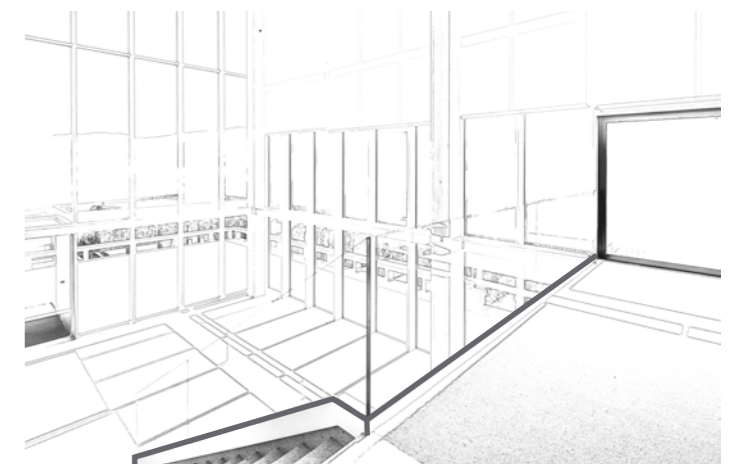
- Range of shop front & door sections available
- Double & single door profiles available
- Choice of top rails, bottom rails and a mid-rails available
- Screw port fixing for shop front sections
- Multiple glass thickness' available from 6 to 28,8 mm double glazing
- Internally beaded for increased security
- Sections available for use with auto gearing as well as manual pivot



TYPICAL CONFIGURATIONS



Glass balustrade



Exlabesa Building Systems Ltd.

Ogden Road - Wheatley Hills
DONCASTER DN2 4SG
Tel. +44 01302 762500 Fax + 44 01302 762557
www.exlabesa.co.uk



EXLABESA
ARCHITECTURE

Glass Rail

Glass balustrade.

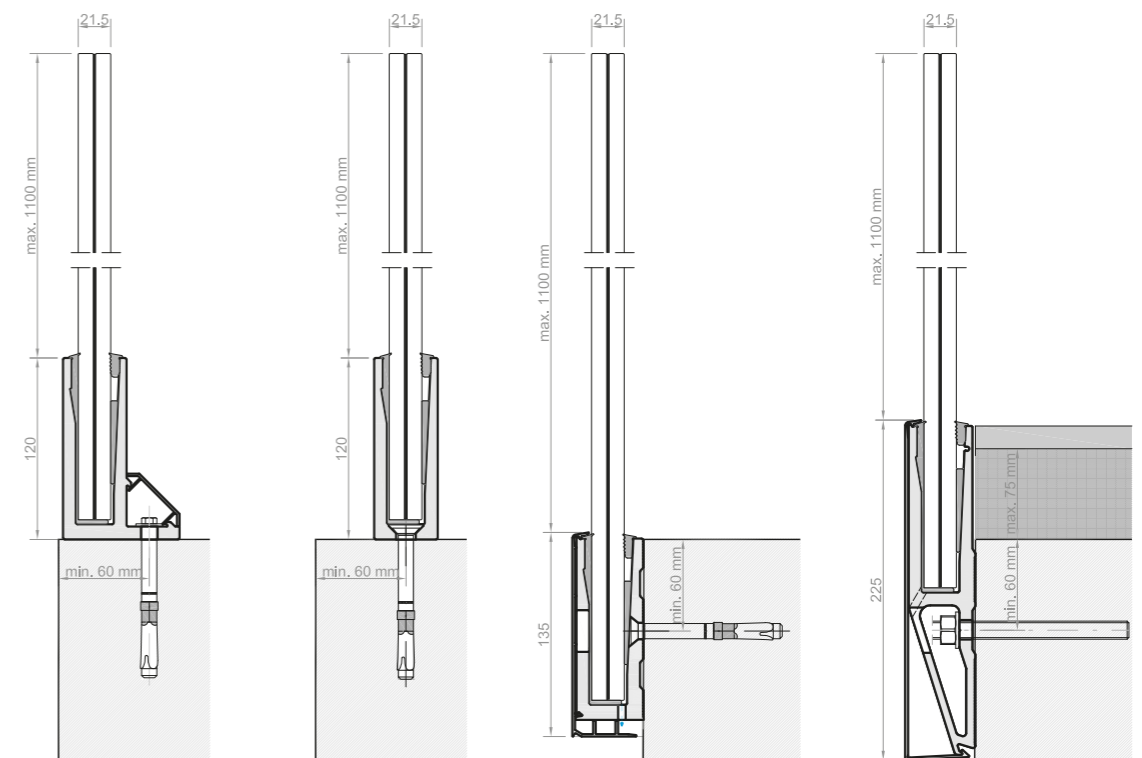
Glass Rail balustrade system has been developed to provide full safety in residential buildings with minimal visual disruption. This is a fully transparent glass balustrade system compatible with a range of terrace and staircase applications. All vertical components are totally removed to create a complete glass wall effect.



Maximum height	1100 mm
Fixing options	Top U Top F Side U Side Y
Loads (Approved to BS-6180)	0,74 to 1,5 kN/m
Glass thickness	15 / 16,76 / 17,52 / 20,76 / 21,52 mm

Features

- Base level fixing only
- Clean lines to enhance light and space
- 15 / 16.76 / 17.52 / 20.76 / 21.52 mm glass thickness
- Up to 1100 mm high
- Approved to BS-6180: 0,74 to 1,5 kN/m
- 4 mounting options available Top U, Top F, Side U and Side Y
- Wide range of colours available
- Silver anodised and mill finish bar lengths in stock



We take care of the planet designing eco-friendly systems

Why aluminium?

Aluminium is a 100% recyclable material without loss of quality. Its excellent technical features and unmatched properties position it as one of the key materials in the building industry.

We care aluminium, caring for our planet

Exlabesa Clean Planet initiative aims to improve the environment, develop a more sustainable production system whilst reducing our CO₂ footprint.

Exlabesa owns a state-of-the-art recycling plant that allow us to manufacture recycled aluminium billets which are later used to extrude new profiles reducing significantly our footprint and energy consumption.

Light
Strong
Malleable
Non-corrosive
100%
recyclable



Giving colour to creativity

Colours by Exlabesa

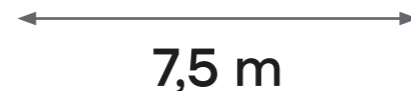
At Exlabesa we have extraordinary production capabilities that allow us to offer an unlimited range of finishes, providing a bespoke solution for any building project. The colour options in our painting range are unlimited and include options such as gloss, matt, satin and textured.

We also guarantee long-term quality and durability. Our painting process is certificated under the Qualicoat label that guarantees the quality of our production procedures and processes, as well as the final product one.

Long-term quality
and durability
guaranteed



Capacity to
paint and anodise
profiles up to



Extruding and shaping
your world

Capabilities born from your needs

At Exlabesa, we complete the entire aluminium production process to make anything you have imagined a reality while respecting the environment we live in.

27

EXTRUSION
PRESSES

9

PAINT
PLANTS

11

POLYAMIDE
ASSEMBLY LINES

30

MACHINING
CENTRES

5

ANODISING
PLANTS

2

BENDING
CENTRES

1

RECYCLING
PLANT

Impossible? Not for us

Facts & Figures

At Exlabesa we want to make aluminium a solution that allows the world to have the shape it needs, discovering new ways for architecture, making the impossible possible.

Exlabesa has a solid business background of more than 50 years and is currently one of the world leaders in the aluminium systems industry.

Present at a commercial level in more than 40 countries and with 9 production sites located in the USA, UK, Germany, Spain, Poland, Portugal and Morocco we provide high quality glazing solutions for a wide range of commercial, residential and industrial applications.



210 000 m²
OF FACTORY

220 000 Tm/year
EXTRUSION CAPACITY

160 000 Tm/year
EXTRUDED ALUMINIUM



15 000
CUSTOMERS

1800
EMPLOYEES

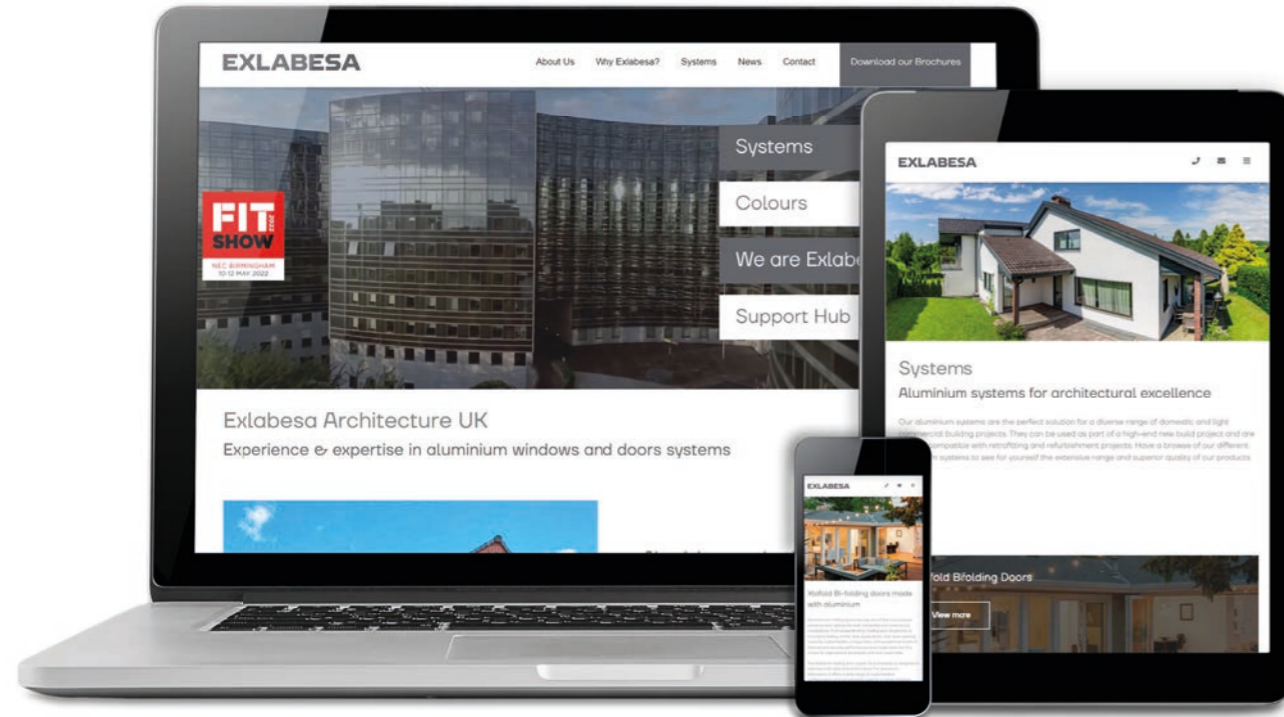
20
WORK CENTRES



40
COUNTRIES

9
PRODUCTION CENTRES

3
CONTINENTS



exlabesa.co.uk

All the information at your disposal.

Information is key for the correct selection, fabrication and installation of our aluminium building systems. Therefore, at exlabesa.co.uk we offer all kind of up-to-date technical documentation such as fabrication manuals and data sheets. You can also design your projects using our CAD sections and estimate your material requirements using our software.

Visit us at exlabesa.co.uk and explore the infinite possibilities offered by our aluminium systems.



Exlabesa Building Systems Ltd.

Ogden Road - Wheatley Hills
DONCASTER DN2 4SG
Tel. +44 01302 762500 Fax +44 01302 762557
www.exlabesa.co.uk

QUALICOAT | ISO 9001 | PAS 24:2016

